

Community information session

Bushfire recovery in East Gippsland parks

Acknowledgement of Country

I acknowledge the Traditional Owners of the land on which we are meeting.

I pay my respects to their Elders, past and present, and the Elders from other communities who may be here today.

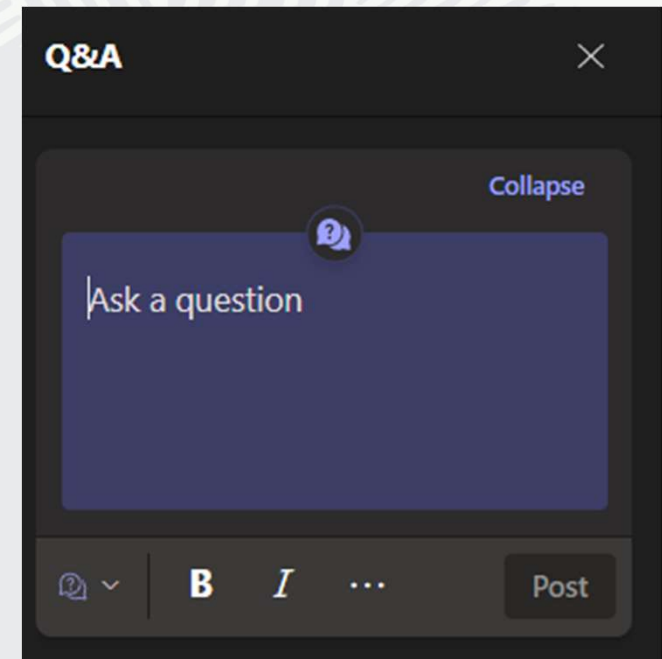
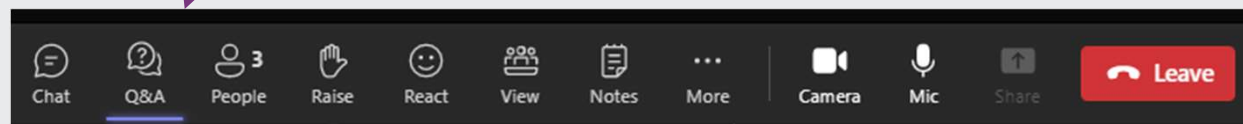


Agenda

- Welcome, introductions and tech explainer
- Recovery works across East Gippsland
- Bushfire recovery works:
 - Cape Conran Coastal Park
 - Buchan Caves Reserve
 - Croajingolong National Park
- Regional Development Victoria update
- Q&A

How to get involved today

Ask a question
Use this to post a question
in the chat



Technical help

Please contact Caz - 0401 068 273

Email: engage@parks.vic.gov.au

Recovery works in parks across East Gippsland

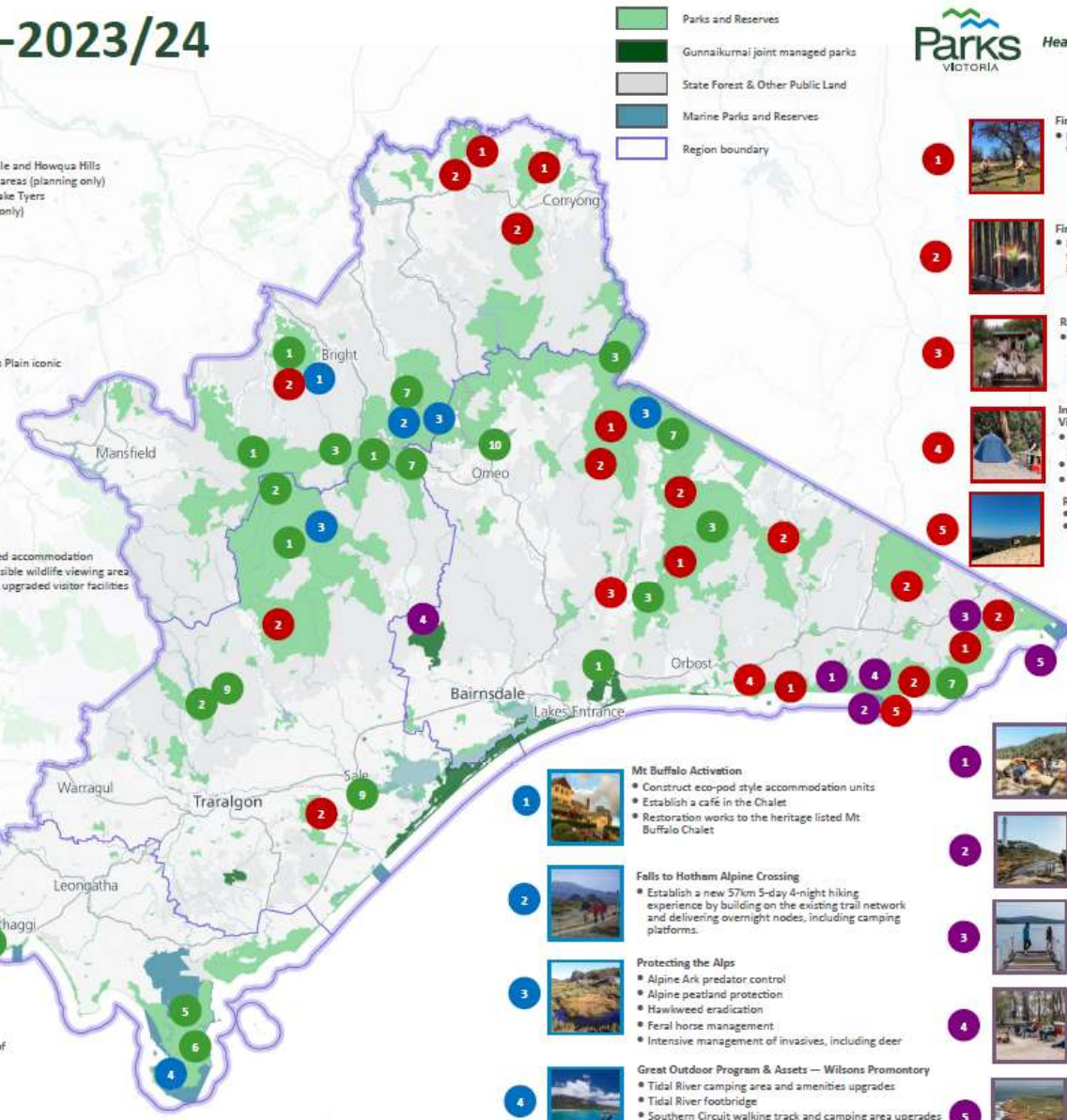
- Over 90 per cent of the land Parks Victoria manages in East Gippsland was impacted by the Black Summer bushfires.
- Subsequent storm and flood events compounded damage in many areas.
- All parks with the exception of Point Hicks Lighthouse Reserve are now open to visitors once more.
- We're continuing to rebuild infrastructure and facilities to help rejuvenate visitation and tourism, protect the areas' environmental and cultural values, and build back better.
- Fire recovery can be complex and lengthy – but we understand the importance of Gippsland's parks and visitor facilities.



Eastern Victoria—2023/24

Key projects

- 1  **Great Outdoors Program—Camping**
 - Improve iconic high country campgrounds: Talbotville and Howqua Hills
 - Upgrade Wonnangatta and Horseyard Flat camping areas (planning only)
 - Improve camping, access & heritage protection at Lake Tyers
 - Upgrade Jacksons Crossing Camping area (Planning only)
- 2  **Great Outdoors Program—Walking Tracks**
 - Australian Alps Walking Track (planning)
- 3  **Great Outdoors Program—Four Wheel Driving**
 - Enhance the Wonnangatta, Snowy River and Davies Plain iconic four wheel drive touring routes
- 4  **Yallock-Bulluk Marine and Coastal Park**
 - Undertake engagement, park planning and design
 - Construct new park facilities in line with plans
- 5  **Wilson's Promontory Revitalisation**
 - Predator-proof fence
 - Additional eco-friendly and all abilities access roofed accommodation
 - Walking Track Upgrades: Telegraph Saddle & accessible wildlife viewing area
 - New visitor information hub, education centre and upgraded visitor facilities
- 6  **Wilson's Prom Sanctuary**
 - Habitat restoration
 - Invasive species control
 - Threatened species re-introductions
 - Fire ecology
- 7  **Protecting Biodiversity**
 - Mountain pygmy possum protection
 - Feral pig control
 - Ox-eye daisy control
 - Coastal weed control
- 8  **Southern Brown Bandicoot Protection**
 - Protect the endangered Southern Brown Bandicoot
- 9  **Replace and Repair High Risk Assets**
 - Plan repairs and upgrades to the Walhalla Tramway Bridge
 - Repair and upgrade Sale Common boardwalks
- 10  **Anglers Rest Walking Tracks Concept Planning**
 - Develop a concept plan for an improved network of walking tracks in the Anglers Rest area



- 1  **Mt Buffalo Activation**
 - Construct eco-pod style accommodation units
 - Establish a café in the Chalet
 - Restoration works to the heritage listed Mt. Buffalo Chalet
- 2  **Falls to Hotham Alpine Crossing**
 - Establish a new 57km 5-day 4-night hiking experience by building on the existing trail network and delivering overnight nodes, including camping platforms.
- 3  **Protecting the Alps**
 - Alpine Ark predator control
 - Alpine pestland protection
 - Hawkwild eradication
 - Feral horse management
 - Intensive management of invasives, including deer
- 4  **Great Outdoor Program & Assets — Wilson's Promontory**
 - Tidal River camping area and amenities upgrades
 - Tidal River footbridge
 - Southern Circuit walking track and camping area upgrades
 - Tidal River 'changing places' facility
 - Sealer cove boardwalk replacement

- Parks VICTORIA Healthy Parks Healthy People!**
- VICTORIA State Government**
- 1  **Fire Recovery Visitor Assets**
 - Repair, rebuild and improve fire-affected sites visitor facilities and infrastructure
 - 2  **Fire Recovery Biodiversity Protection**
 - Intensive invasive plant and animal control and fencing to protect biodiversity values recovering from the impacts of large scale bushfires
 - 3  **Rebuilding a Better Buchan Caves**
 - Prepare a site concept plan, rebuild and improve the campground, accommodation, visitor facilities and other infrastructure at the GunnaiKurnai joint managed Buchan Caves Reserve
 - 4  **Improving Cape Conran Camping, Accommodation and Visitor Experience**
 - Design and construct an essential services (potable and waste water) connection and bike path to Marlo
 - Build new eco-pods
 - Rebuild burnt visitor facilities and infrastructure
 - 5  **Reinstate the Thurra Bridge and Camping Area**
 - Rebuild the Thurra River bridge
 - Reinstate and improve the Thurra River camping area
 - 1  **Croajingolong Coastal Wilderness Walk**
 - Develop the Croajingolong Coastal Wilderness Walk
 - 2  **Point Hicks Visitor Precinct**
 - Upgrade the Point Hicks Light station, including improvements to the existing accommodation while protecting heritage features, new camping opportunities and upgrades to vehicle access
 - 3  **Improving Mollacoote Inlet Visitor Facilities**
 - Replace six jetties, upgrade day visitor facilities around Mollacoote Inlet and assess the feasibility of a new Lakeview interpretative walking track
 - 4  **Improved Camping Opportunities in East Gippsland**
 - Angusvale campground major upgrade
 - Upgrade Peachtree Creek camping area, Croajingolong
 - 5  **Gabo Island**
 - Refurbish Gabo Island Lighthouse accommodation and visitor facilities to create a unique wildlife viewing experience
 - Design and plan for the construction of a replacement jetty for Gabo Island

Highlights of completed recovery works



- Campground upgrades
 - Shipwreck Creek, Croajingolong NP
 - Banksia Bluff, Cape Conran CP
 - Angusvale, Mitchell River NP
 - Anglers Rest, Alpine NP
- Picnic areas
 - Fairy Dell Flora Reserve
 - Cann River Bushland Reserve
 - Potholes Cave Reserve
- Road and track repairs
 - Mitchell River Road, Mitchell River NP
 - Moorsford Road, Snowy River NP
 - Shipwreck Creek walking track, Croajingolong NP
 - Snowy River Estuary Walk upgrade
- Hazardous tree management across East Gippsland
- Roadside vegetation management across East Gippsland

Works complete at Cape Conran Coastal Park



- 135 campsites re-instated at Banksia Bluff Campground
- All beach access paths and stairways re-instated and improved with new beach marker bollards
- Campsites upgraded to improve definition, access, size, surfaces and links to amenities. Campfire rings installed.
- Fire-damaged beach showers upgraded, including two upgraded to be all-abilities accessible
- Toilet blocks replaced with all-abilities facilities
- Pine bollards replaced with recycled plastic bollards to improve carparking within East Cape
- Extensive vegetation management to manage regrowth, and nurture emerging flora and habitat
- Many hazardous trees removed and extensive ongoing tree hazard works
- Commenced construction of roofed accommodation cabins offsite
- Most walking tracks are open
- Yeerung Lookout is complete
- Estuary View Walk restored

What we're working on at Cape Conran Coastal Park

East Cape Boardwalk replacement

East Cape Boardwalk extension

Yeerung Bridge reinstatement

Improving Cape Conran site services, including water supply (from Marlo to Conran), and waste-water management

Cape Conran Activity Centre replacement

Cape Conran staff Office, Customer Service and Retail Centre replacement

Remaining walking tracks reinstated

Replacement of interpretive information and signage in the new Activity Centre, Office and several walking tracks



Cape Conran roofed accommodation project

The bushfires destroyed three cabins and all five wilderness retreats at Cape Conran Coastal Park. This project will replace and upgrade the lost accommodation to create better accommodation options for visitors of diverse backgrounds and abilities at the park.

To recommence construction work at Cape Conran we are now:

- preparing a new ecological assessment to address the impact of proposed works and the need for any additional permits
- preparing a Cultural Heritage Management Plan (CHMP)

These permit works are currently underway and field work is taking place

Subject to on-ground conditions and approvals, the new cabins are expected to be brought to site for installation in mid-2024.



Works complete at Buchan Caves Reserve



- Campground reopened at 70 per cent capacity in Sep 2020 and soon after operating at full capacity
- 90 per cent of all walking tracks have reopened
- Damaged trees assessed, treated or removed
- Site Concept Plan developed in 2022
- Buchan pool re-opened in April 2023
- All but one vehicle bridge rebuilt
- Reclaimed timber used in park furniture
- Shared path delivered by East Gippsland Shire Council

What we're working on at Buchan Caves Reserve

Fairy Caves Entrance roof replacement

Guides Hut replacement

North Arm roofed accommodation, camp kitchen and laundry

North Arm flood mitigation

North Arm Bush Picnic Area, Cultural Space and Day Visitor Area Yarning Circle

Spring Creek Walking Track reinstatement with the bridge and lookout replacement

Reviewing options for pool improvements



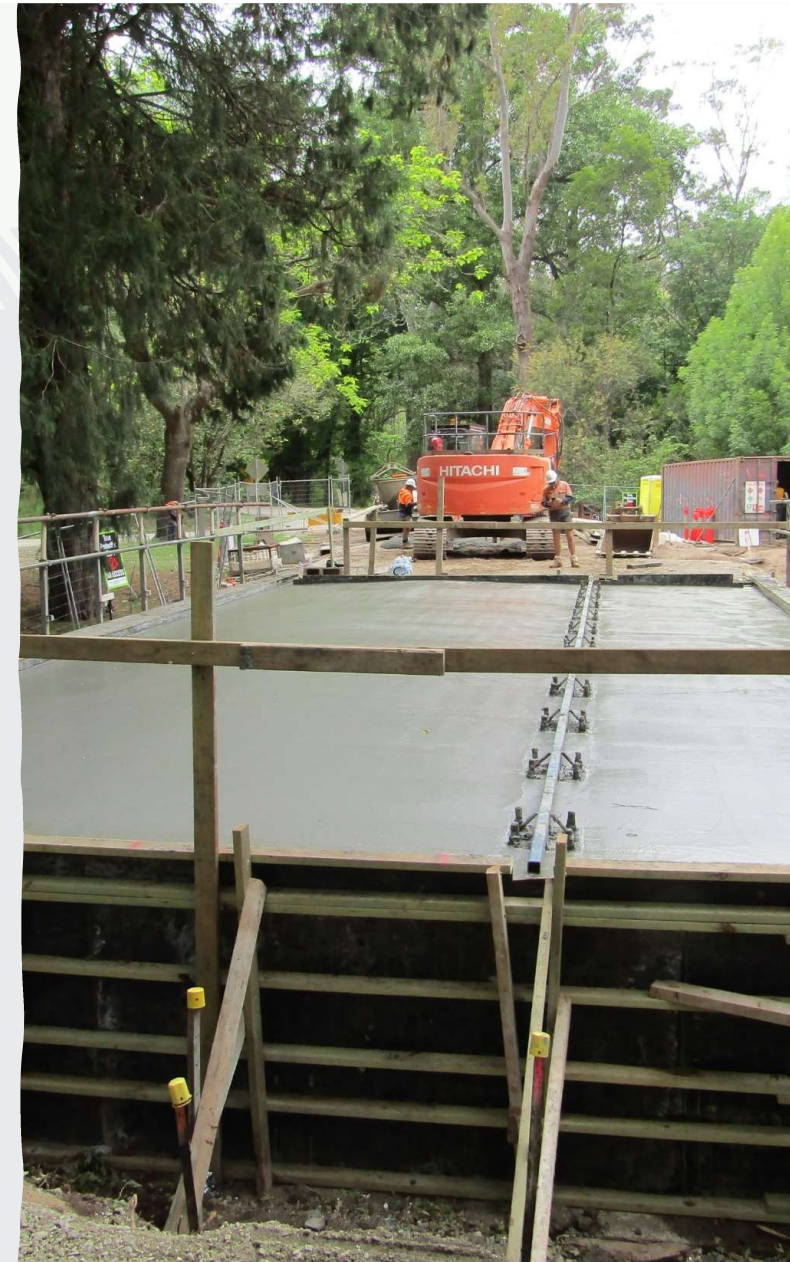
What we're working on at Buchan Caves Reserve

Linakar tree planting

Buchan Bridge No. 2 replacement and ongoing road surface improvements

Spring Creek Cultural Trail with Gunaikurnai Land and Waters Aboriginal Corporation (GLaWAC)

Cave experience improvements – pathways and lighting



Works complete at Croajingolong National Park



- Toilets rebuilt at Captains Creek
- Jetties rebuilt at
 - Genoa River
 - Gravelly Point
 - Sou West Arm
 - Captains Creek
- Hazardous tree work and vegetation management
- Wilderness Coast Walk vegetation management
- Roads repaired – Centre Track, West Wingan Road, Point Hicks Road,
- Mallacoota Endemic Garden
- Walking tracks and assets repaired at
 - Genoa Peak
 - Lake Elusive
 - Gale Hill Track
 - Double Creek Nature Trail
 - The Narrows
 - Everard Walking Track
- Bollards and campsites re-established at Shipwreck Creek campground
- Wingan Boardwalk rebuilt

What we're working on at Croajingolong National Park and surrounds

Mallacoota Inlet jetties and day visitor areas upgrades

New toilets at Genoa River Fire Trail, Sandy Point, and Sou West Arm

Mallacoota Endemic Garden, in partnership with Friends of Mallacoota and Royal Botanic Gardens

Point Hicks Lightstation - upgrades across the precinct

Thurra River Campground

Planning for the Croajingolong Coastal Wilderness Experience



Thurra River Bridge Redevelopment Project



OFFICIAL



Current Situation – Thurra Bridge Redevelopment Project

Project Delivery – 2022:

- While Thurra River Bridge is a Parks Victoria Asset, in 2022 delivery responsibility of the project was transferred to DEECA.

Pre-Tender Engineering - April 2023:

- All engineering activities completed.

Planning - May 2023:

- All planning activities completed.

Tender – Current (commenced July 2023):

- The tender for bridge construction was released on the 14th of July, with industry briefings held on the 27th of July. Tender closed in September. Contract award is expected to occur in late December.

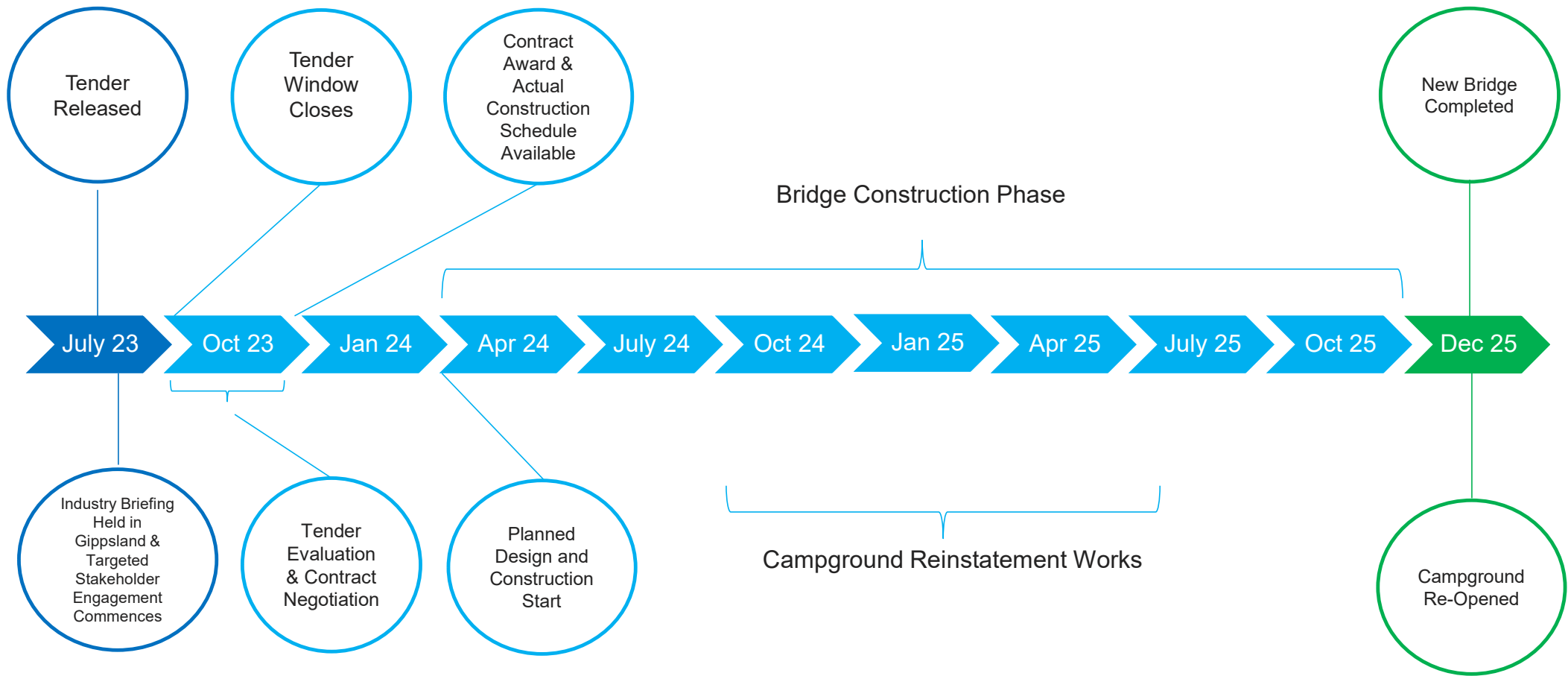
Stakeholder Engagement:

- Updates on the Thurra River Bridge Project will be on the Parks Victoria website.
- Targeted stakeholder engagement will be undertaken throughout the life of the project with Destination Gippsland, East Gippsland Shire Council, GLWAC, Orbost Chamber of Commerce and Regional Development Victoria

What's next?

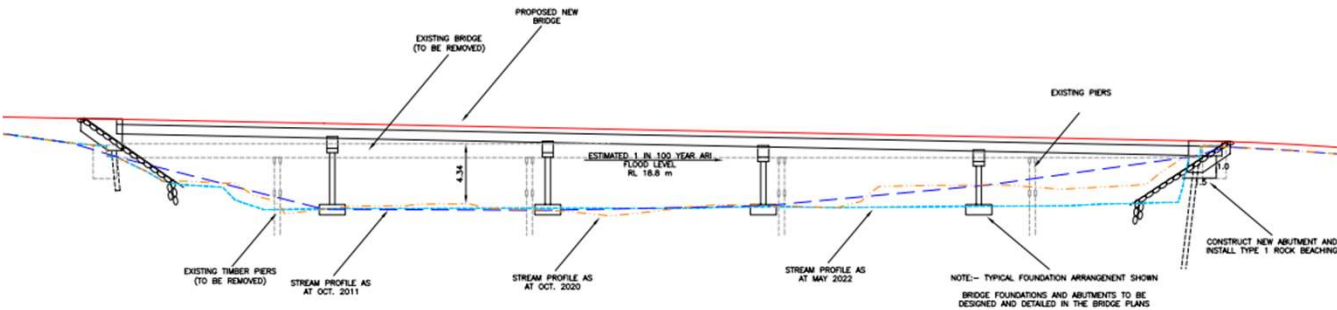
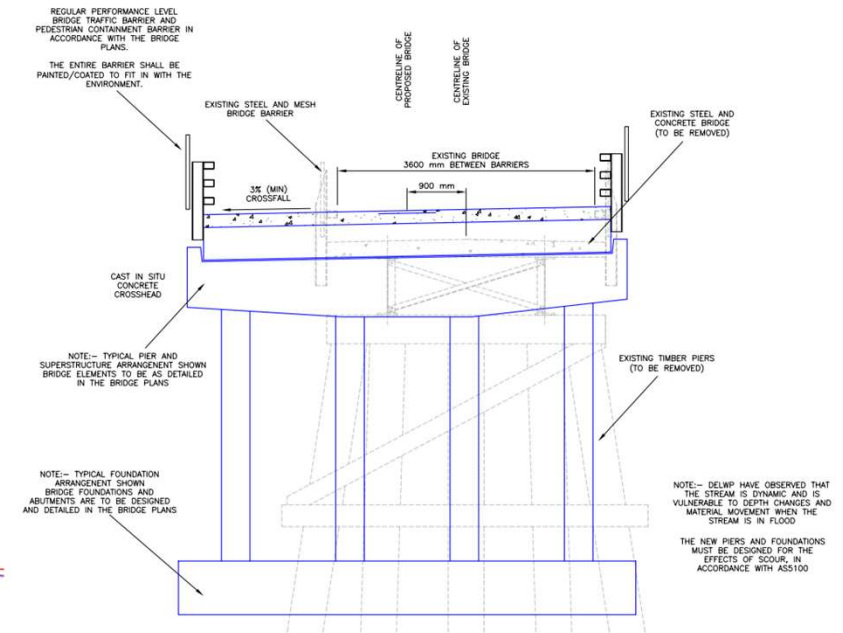
- It is expected that the contract will be awarded in late 2023, with design and construction due to commence in the first half of 2024.
- The project is scheduled for completion in late 2025.
- The bridge provides access to the Thurra River Campground which is expected to be reopened once the bridge has been reinstated.

Planned Timeline to Completion From July 2023



Project Information

- The existing collapsed bridge will be demolished and removed from site
- Key information on the new Thurra bridge:
 - Designed to be in accordance with current Australian Standards
 - Located on the same alignment as the existing bridge
 - 100-year design life
 - Constructed of steel and concrete material
 - Geotechnical and hydraulic conditions and requirements will be considered
 - Vehicle and pedestrian safety barriers will be incorporated
 - Support and allow for emergency heavy vehicle access



Project Information

Parks Victoria and DEECA have been working together to repair and ensure the Points Hicks Road is safe for Thurra Bridge Construction vehicle access. Recent works have included:

- Road repair work
- Engineering Investigation work of existing crossings on Point Hicks Road

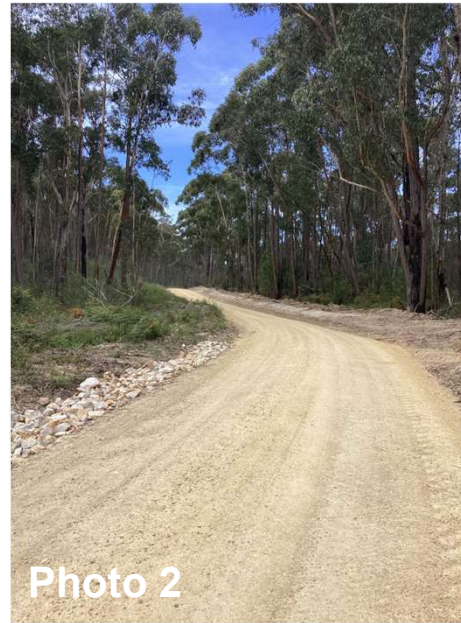


Photo 1 and 2 shows recent road repair works completed by PV on Point Hicks Road.

Photo 3 shows the existing bridge crossing on Point Hicks Roads that Thurra bridge construction vehicles will need to travel over.

OFFICIAL

Regional Development Victoria (RDV) funded infrastructure opportunities

Two Black Summer Bushfire related funding programs:

- Local Economic Recovery funded infrastructure projects
- Bushfire Tourism and Business funded infrastructure projects

Some projects co-funded through other funding programs:

- Paynesville Foreshore and Metung Hot Springs

Over \$20 million total funding

Local economic recovery program

Rebuild value-add of Mallacoota Abalone Limited Processing Facility Expansion

- Project complete, multiple funding programs

Tambo Valley Honey Shop

- Project complete

Metung Hot Springs

- Project complete

Envite Environment: training and skills for bushfire economic recovery

- Project complete

Riviera Nautic Jetties Redevelopment

- Project complete



Local economic recovery program

Dark Skies Trail

- Project in progress, close to completion

Lakes Entrance Old Slipway Activation

- Project in progress, close to completion

Buchan Streetscapes and Local Link Improvements

- Project in progress, completion 2023

Bruthen Streetscape Enhancements

- Project in progress, completion 2024

Sailors Grave Brewing Dune Town Brewery

- Project in progress, completion 2024

REGIONAL
DEVELOPMENT VICTORIA



Bushfire Tourism and Business Fund Program

Rebuilding the Abalone Processing Facility

- Project complete, multiple funding programs

Paynesville Foreshore Masterplan

- Project complete, construction in progress through other funding, completion 2024

Buchan Caves Reserve

- Project in progress, multiple funding programs



Questions?

- Put your question in the chat
- A summary will be provided after the session



Thank you

Information about bushfire recovery is on the Parks Victoria website:

www.parks.vic.gov.au/projects/eastern-victoria

Subscribe to for e-newsletters and updates.

Reach us after this session at engage@parks.vic.gov.au

We would like to hear from you. Please complete the **feedback form (QR code)**.

Community Information Session
evaluation - East Gippsland
Bushfire Recovery

