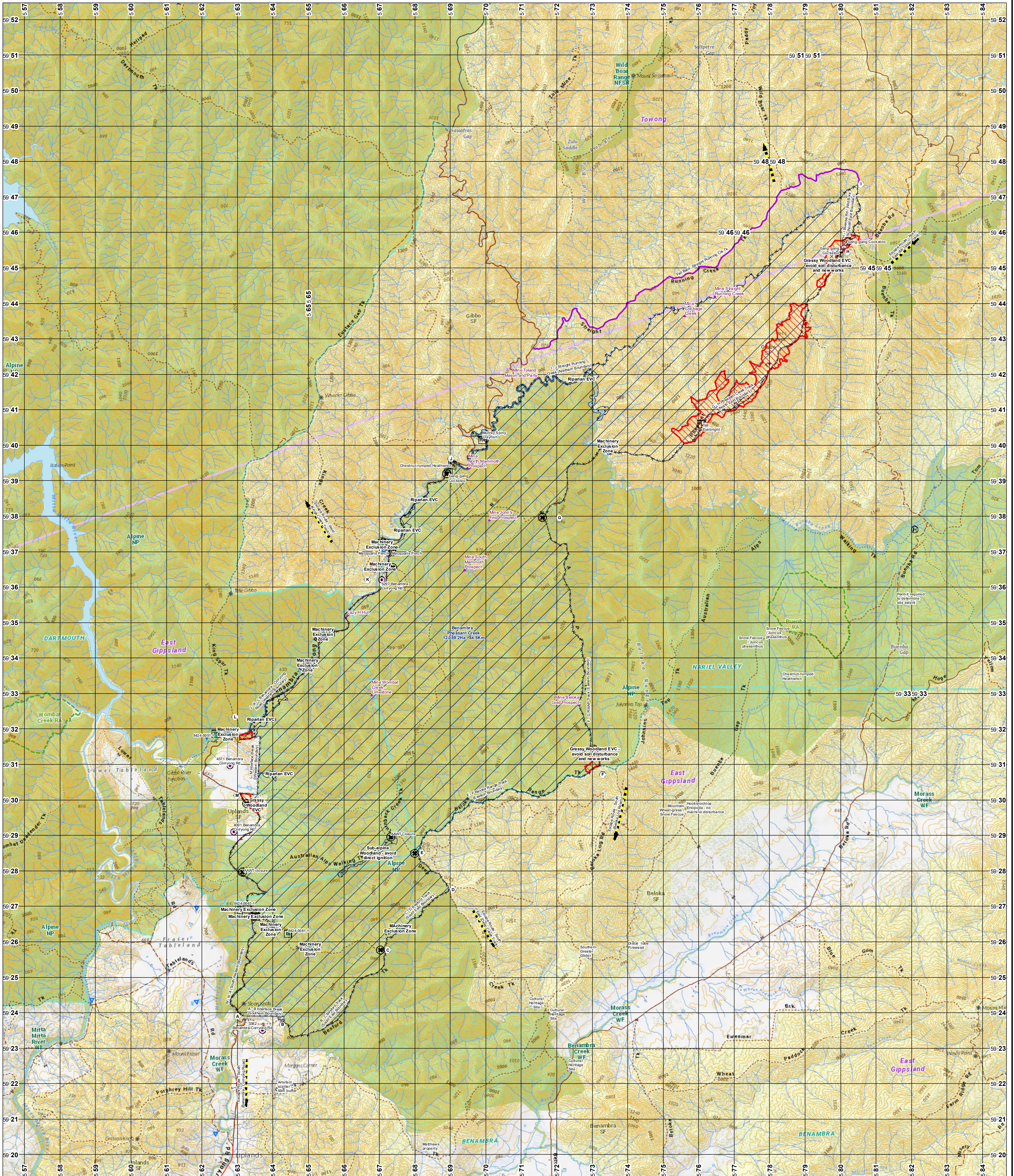


Benambra - Pheasant Creek (GP-TBO-SCK-0173)

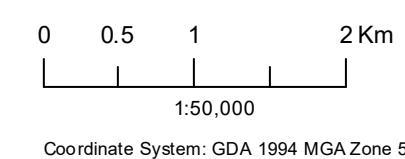
A1 Burn Operations Map

Indicative Year: 2024



High Voltage Power Cable	Historic Site	Burn Point of Interest	Perimeter Control Line	Contingency	Domestic Firewood and Minor Forest Produce
High Voltage Power Line	Indigenous Site	Operations Point	Internal Access	General Polygon	Invasive Pests, Weeds and Pathogens
Electricity Transmission Network	Retardant Air	Proposed Ignition Point	Escape Route	Hazardous	Other Forest Operations
Local Features/ Buildings	Significant Fauna	Refuge / Assembly	Fall Back Line	Machinery Exclusion Zone	Recreation
Air Strip	Significant Flora	Road Closure	Lighting Pattern -	Personnel Exclusion Zone	Roading
Asset	Tower	Sector Extremity (East-West)	Lighting Pattern - Hand	Steep Slope	Silviculture and Reforestation
Asset - Defendable	WP - Helicopter	Smoke over Road Sign	One Way Traffic	Target	
Asset - Not Defendable	WP - Vehicle	Staging Area - Marshalling Point	General Line	Fuel Treatments	
Asset - Potentially Defendable	Wash Down Point	Contingency Identifier	Sector Line	Parks and Reserves	
Helipad	Water Point	Boundary Weak Point	Division Line	State Forest/ Other Public Land	
	Base Camp		Contours	Treated Area	
			Burn Exclusion Zone	Treated Area Mechanical Works	
				Public Land Management Overlays	

Disclaimer: This map is a snapshot generated from Victorian Government data. This material may be of assistance to you but the State of Victoria does not guarantee that the publication is without flaw of any kind or is wholly appropriate for your particular purposes and therefore disclaims all liability for error, loss or damage which may arise from reliance upon it. All persons accessing this information should make appropriate enquiries to assess the currency of the data.



Produced on: 2/24/2023 2:18:26 PM

Coordinate System: GDA 1994 MGA Zone 55