

LICENSED TOUR OPERATOR PROSPECTUS



Grampians Peaks Trail
May 2021



Acknowledgement of Country

Grampians National Park is part of the Gariwerd Aboriginal cultural landscape, which spans the ancestral lands of the Djab Wurrung and Jadawadjali Peoples.

Parks Victoria respects Traditional Owners' deep and continuing connection to these lands and waters and we recognise their ongoing role in caring for Country.

Parks Victoria is working with the Traditional Owners of Gariwerd through the Barengi Gadjin Land Council Aboriginal Corporation, Eastern Maar Aboriginal Corporation and Gunditj Mirring Traditional Owners Aboriginal Corporation to protect and manage the landscape.

Front cover: Mt Stapylton, Grampians National Park

Authorised and published by Parks Victoria
L10, 535 Bourke Street, Melbourne VIC 3000
ABN: 95 337 637 697
parks.vic.gov.au

Copyright © Parks Victoria 2021

Grampians Peaks Trail

World class long distance walking trail

The Grampians National Park is a major Australian attraction and the third most visited park in the state with over 1.3 million visitors per year. To showcase the beauty and majesty of the park, Parks Victoria is developing the Grampians Peaks Trail (GPT).

The GPT will traverse the length of the Grampians National Park along the Gariwerd mountain range. From Mt Zero in the north through to Dunkeld in the south, when complete in September 2021, the GPT will offer mountain vistas, peaks, spectacular scenery, dazzling wildflower displays and diverse wildlife.

Positioned as the longest of the four long distance walks in the Walk Victoria's Icon portfolio, the GPT is a \$33m initiative funded by State and Federal governments for 100km of new tracks, 60km of improved tracks, 11 hike-in campgrounds, a group camp and trail heads along its spine.

Two (2) of the hike-in campgrounds (Gar and Werdug) will be Signature hike-in campgrounds that will feature hut accommodation and large tent pads, to further support a diversified walker market.

Parks Victoria Licensed Tour Operators (LTOs) offer invaluable visitor experiences across the state that connect people and parks and contribute to local visitor economies.

This prospectus outlines LTO opportunities associated with the GPT and details to aid in tour and itinerary development. In particular, the opportunity for exclusive bookings of on-park hut accommodation by LTOs.

- 160 kilometres
- 13 days walk
- 11 overnight hike-in campgrounds (including 2 signature campgrounds)
- 20+ GPT walker trail options
- 4 grade walk
- 1 night in Halls Gap, to provide a variety of accommodation opportunities

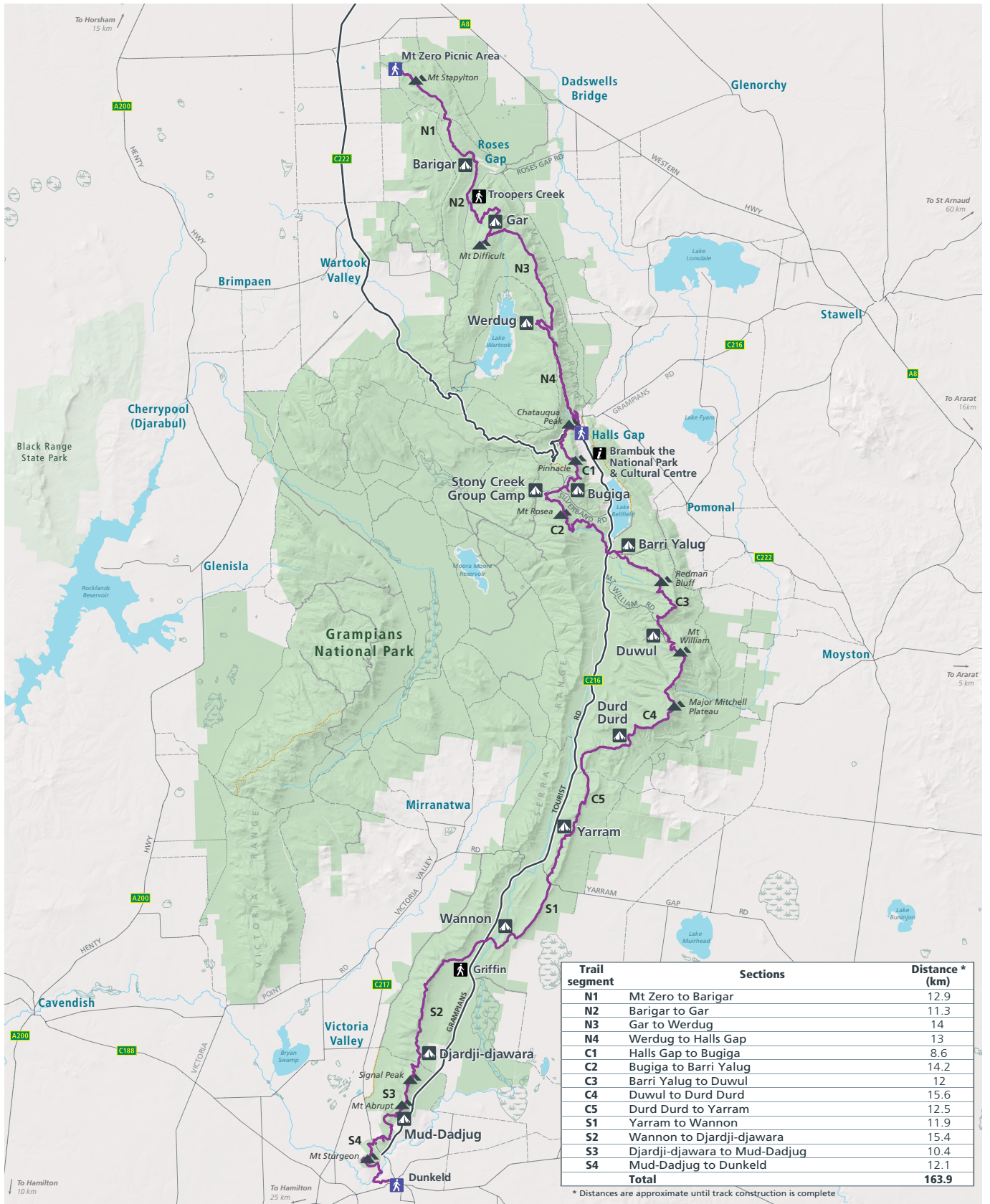
35,000
targeted
walking visitors p.a.

975
native plant
species

90
wildlife species

\$6.39m
local benefit p.a.

Grampians Peaks Trail



Grampians Peaks Trail - Project Overview (As at July 2020)

- Hiker camps
- Major trail heads
- Minor trail heads
- Mountain/peak
- Highway
- Main road
- Sealed road
- Unsealed road
- 4WD track
- Seasonal closure
- Management vehicle only
- Grampians National Park
- Other park/reserve
- Waterbody
- Wetland/Swamp



www.parks.vic.gov.au
 Disclaimer: Parks Victoria does not guarantee that this data is without flaw of any kind and therefore disclaims all liability which may arise from you relying on this information.
 Cartography by Parks Victoria April 2020.



GRAMPIANS PEAKS TRAIL
 Walk Victoria's Icons

GPT Sections

The Grampians Peaks Trail project is made up of 13 key sections, classified into the Northern (N), Central (C) and Southern (S) Grampians. With multiple entry and exit points, LTO's will also have the ability to access the trail via multiple major and minor trail heads.

NORTHERN GRAMPIANS



N1: Mt Zero to Barigar 12.9 km. Medium-hard with some hard climbs

From the far north of the park, hike through a rock amphitheatre to the summit of Mt Stapylton. Here the trail overlooks the Wimmera Plains, follows rocky escarpments and descends into Barigar.

N2: Barigar to Gar 11.3km. Medium-hard

Enjoy a walk along low ridge lines with views to Briggs Bluff and Mt Difficult, crossing Roses Gap Road, then hike an ascending track past seasonal cascading waterfalls before a hard climb to Gar; perched below Mt Difficult.

N3: Gar to Werdeg 14km. Medium with some medium-hard pinches

Hike up and down the Mt Difficult eastern escarpment, leading to widespread views to the east, and to the west of the Wartook basin, finishing at Werdeg, overlooking Lake Wartook.

N4: Werdeg to Halls Gap 13km. Medium

This leg involves; weaving through rocky outcrops, a spectacular view from the Lake Wartook lookout and descending below Boroka lookout to Chatauqua Peak into Halls Gap.

CENTRAL GRAMPIANS



C1: Halls Gap to Bugiga 8.6km. Medium-hard

A good climb from Halls Gap via Venus Baths, Elephant Hide, the Grand Canyon, and the popular Pinnacle lookout, through unique geological formations past Lake View to Bugiga.

C2: Bugiga to Barri Yalug 14.2km. Medium-hard

Leaving Bugiga the trail weaves to the summit of Mt Rosea, via the Gate of the East Wind, descends through tall forest past Borough Huts campground, crosses Grampians Road into Barri Yalug.

C3: Barri Yalug to Duwul 12km. Hard

Ascend through rocky terraces, over the Seven Dials, onto Redman Bluff offering 360 degree views, followed by big descents and ascents to Duwul, in the shadow of Mt William.

C4: Duwul to Durd Durd 15.6km. Medium with some hard spots

Traverse the Mt William range. Firstly with an ascent to Mt William (highest peak in the Park), followed by a steep section to Boundary Gap, across the magnificent Major Mitchell Plateau, and into Durd Durd.

C5: Durd Durd to Yarram 12.5km. Medium-hard

A long descent to Jimmy Creek Road, climbing back up a challenging ridge line with views to the east and into Yarram. This is the most remote part of the GPT, with sunset views.

SOUTHERN GRAMPIANS



S1: Yarram to Wannan 11.9km. Medium

The trail descends through the Hidden Valley, crosses Yarram Gap Road, follows a ridge line with views west of the Sierra Range, leading to Wannan nestled in a grassy valley.

S2: Wannan to Djardji-djawara 15.4km. Medium

A short flat section through the Wannan Fan, crossing Grampians Road, a steady ascent via an undulating track along the Sierra Range and into Djardji-djawara.

S3: Djardji-djawara to Mud-Dadjug 10.4km. Hard

Shorter than others this section has several steep ascents / descents, crossing Signal Peak and Mt Abrupt, leading to the dramatic Mud-Dadjug, perched on a high plateau below Mt Abrupt.

S4: Mud-Dadjug to Dunkeld 12.1km. Medium-hard

Descends from Mt Abrupt, crosses the Piccaninny, has a strong climb up and down to Mt Sturgeon, and meanders through red gums along the Wannan River, finishing in Dunkeld.



How is the GPT being optimised and accessible to park users beyond the fit, 13 day independent walker?

Parks Victoria is expanding GPT walker experiences to meet the needs of different visitor markets, optimising trail and hike-in campgrounds and off park servicing.

GPT Product Optimisation

To support a diversified walker market, the Grampians Peaks Trail will target six key user segments. including free and independent walkers, facilitated walkers, guided walkers, day walkers, the education market and event participants.



1. Multiple GPT entry and exit point options
2. Major and minor way finding trail heads
3. Alternative campground access routes for servicing, while balancing the desire for hiker remoteness
4. Dedicated group camp



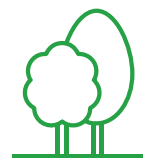
5. Walk diversity with different degrees and lengths of trail difficulty
6. Wider trail sections for group access and side by side walking
7. Connections to National Park attractions, visitor hubs, activities and off park services



8. Famed Aboriginal heritage connections
9. Development of Brambuk the National Park and Cultural Centre (Brambuk) as a significant GPT trailhead, in collaboration with Traditional Owners
10. Diverse hike-in campground landscape locations
11. Signature hike-in campgrounds with enhanced facilities



12. Raised camp pads and larger camp pads suitable for 3 persons
13. Delineation between walker market spaces in shared use camp grounds
14. Covered shelters, including food preparation, dining and storage areas at designated hike-in campgrounds
15. Hike-in campground spaces for coming together, sharing and interpretation
16. Hike-in campground designs that offer a view from every 'room'



17. Environmentally sensitive hut accommodation suitable for groups and families
18. Utilisation of long lasting trail materials that are sensitive to the environment
19. Rainwater collection and on trail water tank access
20. Trail alignment that maximises national park iconic highlights while preserving cultural and biodiversity sites

GPT LTO Licensing Opportunities

Parks Victoria has developed a number of multi day walks of varying lengths and degrees of difficulty. See the Parks Victoria website for further detail. There are opportunities for LTOs to package any of the suggested walk itineraries under a standard GPT LTO licence.

In addition, two Northern Grampians hike-in campgrounds at Gar and Werdug will feature hiker hut accommodation. Proposed to open in September 2021, the huts will only be bookable by LTOs. In addition, LTOs will receive preferential access to large tent pads (with standard tent pads and hike-in campground access available to independent walkers).

STANDARD

GPT
LTO Licence

For: Bushwalking

Term: 1,3*,5 & 10 year

1. Full GPT, any multi day walks or day walks (excluding Gar & Werdug Huts)
2. Dedicated group camp at Stony Creek^Δ

Timelines: Applications open from June 2021.

Note: Full GPT opens September 2021.

SIGNATURE

GPT Northern Peaks
LTO Licence

Exclusive LTO access**

Term: 1,3*, 5 year

Huts (only bookable by LTOs) and preferential bookings for large tent pads at Gar and Werdug.[‡]

Timelines: Applications open from June 2021. Bookings from Mid 2021 (date TBC)

Will be issued as a special condition in a standard GPT licence.

* 3 year licenses only available to compliant LTO's licensed for three consecutive years

Δ Stony Creek group camp ground will be issued as a special condition to a standard GPT licence

** 4 x standard tent pads and access to shelter and toilet facilities will be retained for independent walkers

‡ Large tent pads not booked by LTOs will become available to independent walkers

GPT Camp Facilities

Signature Hike-in Campgrounds are located at Gar and Werdug and include:

- large enclosed shelter
- 2 unisex toilets
- 4 x standard timber tent pads
- 5 x large timber tent pads
- 3 x 4 person huts
- group gathering area
- landscape delineations
- ceremonial fire place (for Traditional Owner ceremonies)

Standard Hike-in Campgrounds are located at Barigar, Bugiga, Djardji-djawara and Mud-Dadjug and include:

- large enclosed shelter (Bugiga - open shelter)
- 2 x unisex toilets
- 12 timber camp pads

Back Country Hike-in Campgrounds are located at Barri Yulug, Duwul, Durd Durd, Yarram and Wannan and include:

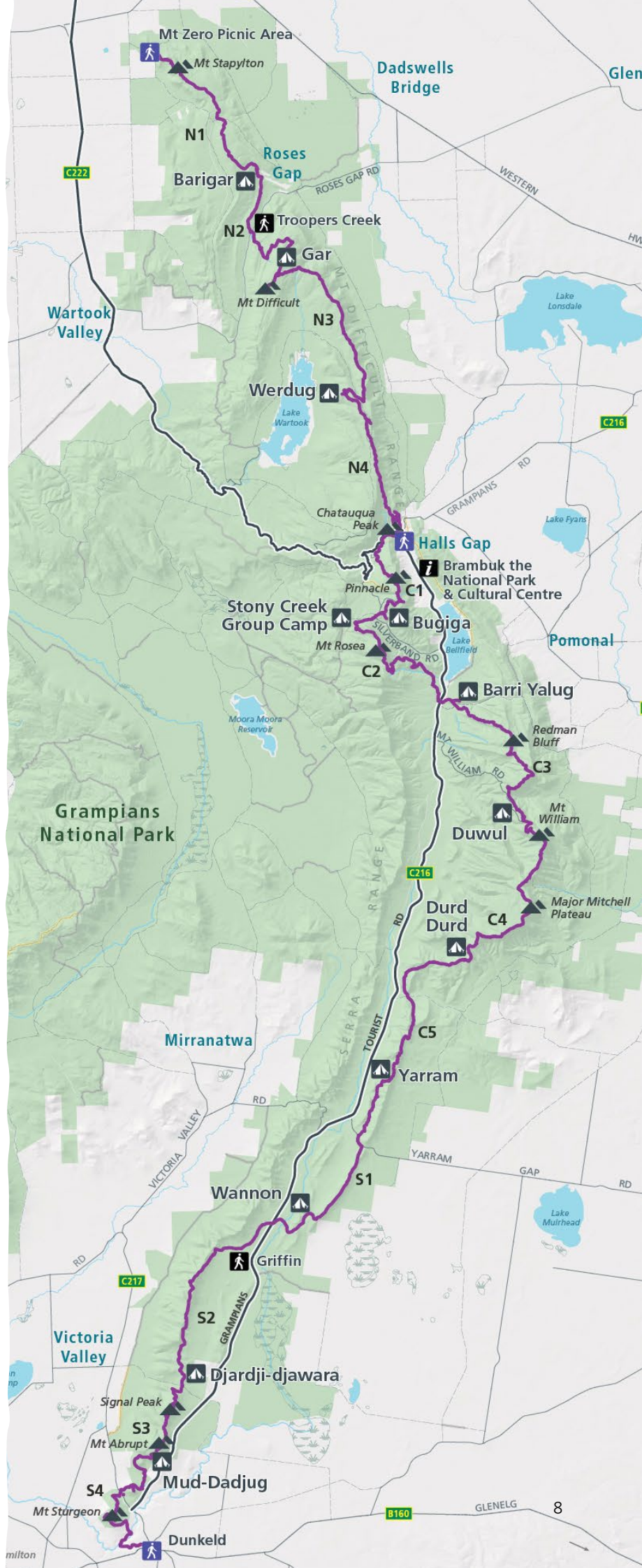
- open shelter (Yarram - large shelter)
- 1 x unisex toilet
- 10 camp pads (6 timber)

A new Group Camp is located at Stony Creek and includes:

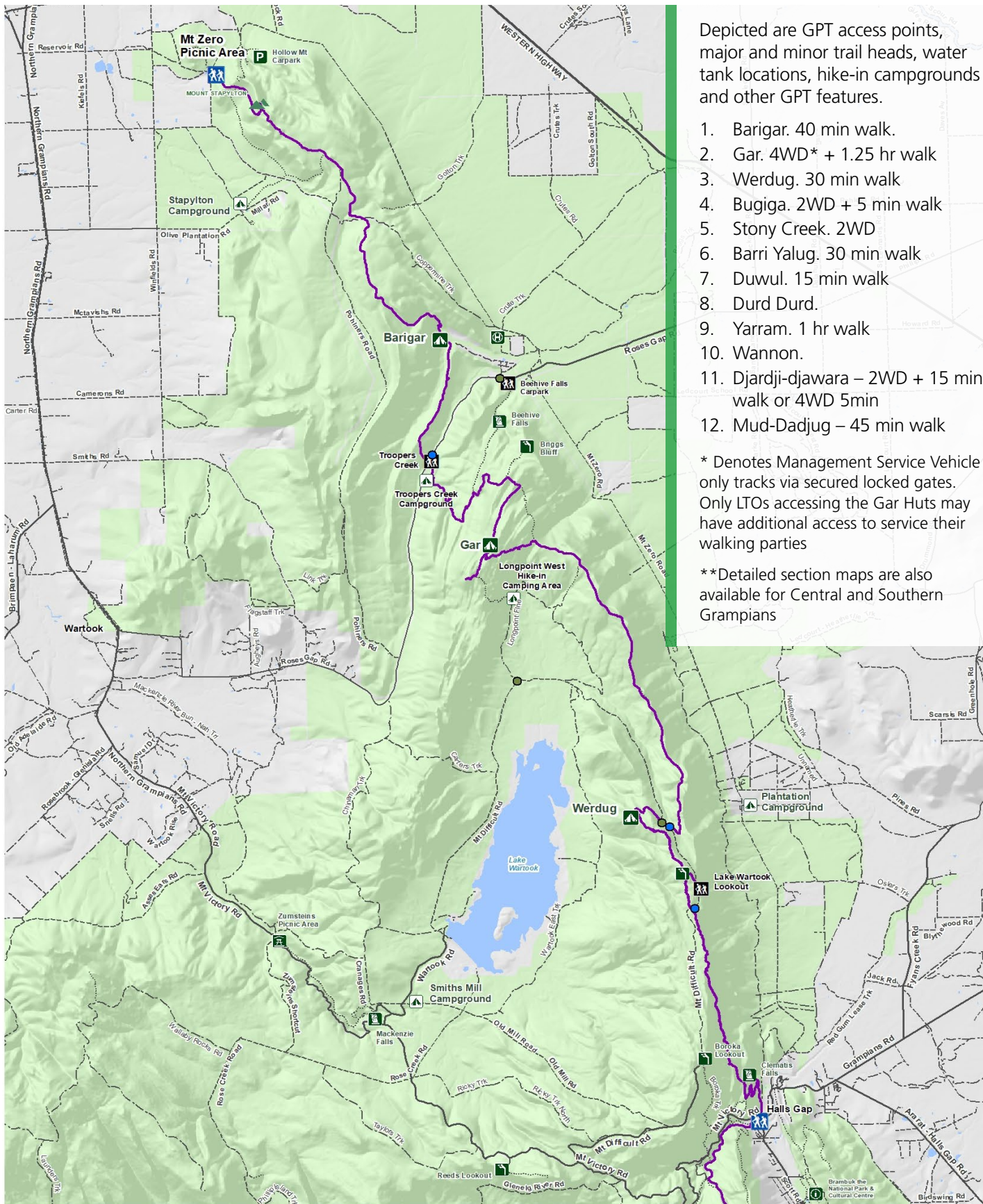
- large enclosed shelter
- 2 unisex toilets
- 8 camp pads
- group gathering area

Further Parks Victoria campgrounds in close proximity to the GPT are located at Stapylton, Coppermine, Troopers Creek, East and West Longpoint, Borough Huts, and Jimmy Creek.

There are also several off-park private group camps surrounding the Grampians National Park, including in Roses Gap, Halls Gap and Dunkeld.



LTO Camp Access



Depicted are GPT access points, major and minor trail heads, water tank locations, hike-in campgrounds and other GPT features.

1. Barigar. 40 min walk.
2. Gar. 4WD* + 1.25 hr walk
3. Werdeg. 30 min walk
4. Bugiga. 2WD + 5 min walk
5. Stony Creek. 2WD
6. Barri Yalug. 30 min walk
7. Duwul. 15 min walk
8. Durd Durd.
9. Yarram. 1 hr walk
10. Wannon.
11. Djardji-djawara – 2WD + 15 min walk or 4WD 5min
12. Mud-Dadjug – 45 min walk

* Denotes Management Service Vehicle only tracks via secured locked gates. Only LTOs accessing the Gar Huts may have additional access to service their walking parties

**Detailed section maps are also available for Central and Southern Grampians

Grampians Peaks Trail - North Section 01/05/2020 Interim Addition

Coordinate System: GDA 1994 VICGR ID94
Projection: Lambert Conformal Conic



Disclaimer: Parks Victoria does not guarantee that this data is without error and therefore disclaims all liability which may arise from relying on this information. Data source is knowledge derived from Digital Mapping. The state of Victoria and the Department of Environment, Land, Water and Planning.

Major Trail Heads	GPT Hiker Camp	Information	Heli-pad	Unsealed road
Minor Trail Heads	Existing Campground	Carpark	Highway/Freeway	4WD
Access Point	Picnic Area	Falls	Main roads	Walking tracks
Water Tank	Grampians Peak Trail	Lookout	Sealed road	



LTO BOOKINGS

Trail fees: covered under the GPT, licence and use fees

Accommodation:

Tent Pads

- Standard Tent Pad (up to 2 people) \$47 per night
- Large Tent Pad (up to 3 people) \$56 per night

Huts

- 1-2 person occupancy \$180 per night
- 3-4 person occupancy \$270 per night

LTO bookings: Parks Victoria online accommodation bookings system Park Stay, Brambuk The National Park and Cultural Centre.

Conditions:

- LTO bookings by hut and tent pad, rather than by bed.
- GPT is only bookable one-way (north to south).
- Maximum 4 persons per hut.
- Shared facilities will be used by both independent walkers and LTOs and their tour groups.
- LTOs will be responsible for leaving the booked sites in a neat and tidy condition and removing all their rubbish.
- Other GPT licence conditions as outlined in Parks Victoria's tour operator licence.

GPT LTO opportunity – Northern Peaks

The availability of Gar and Werdug hike-in campgrounds for LTO only bookings provides the flexibility for different GPT LTO itineraries. A few suggestions are outlined below.

4 day / 3 night

- DAY 1: Hike Mt Zero to Barigar standard hike-in campground (12.9km)
- DAY 2: Hike Barigar to Gar signature hike-in campground (11.3km)
- DAY 3: Hike Gar to Werdug signature hike-in campground (14km)
- DAY 4: Hike Werdug to Halls Gap (13km)

3 day / 2 night

- DAY 1: Hike Troopers Creek to Gar signature hike-in campground (7.5km)
- DAY 2: Hike Gar to Werdug signature hike-in campground (14km)
- DAY 3: Hike Werdug to Halls Gap (13km)

2 day / 1 night (Off-Peak only)

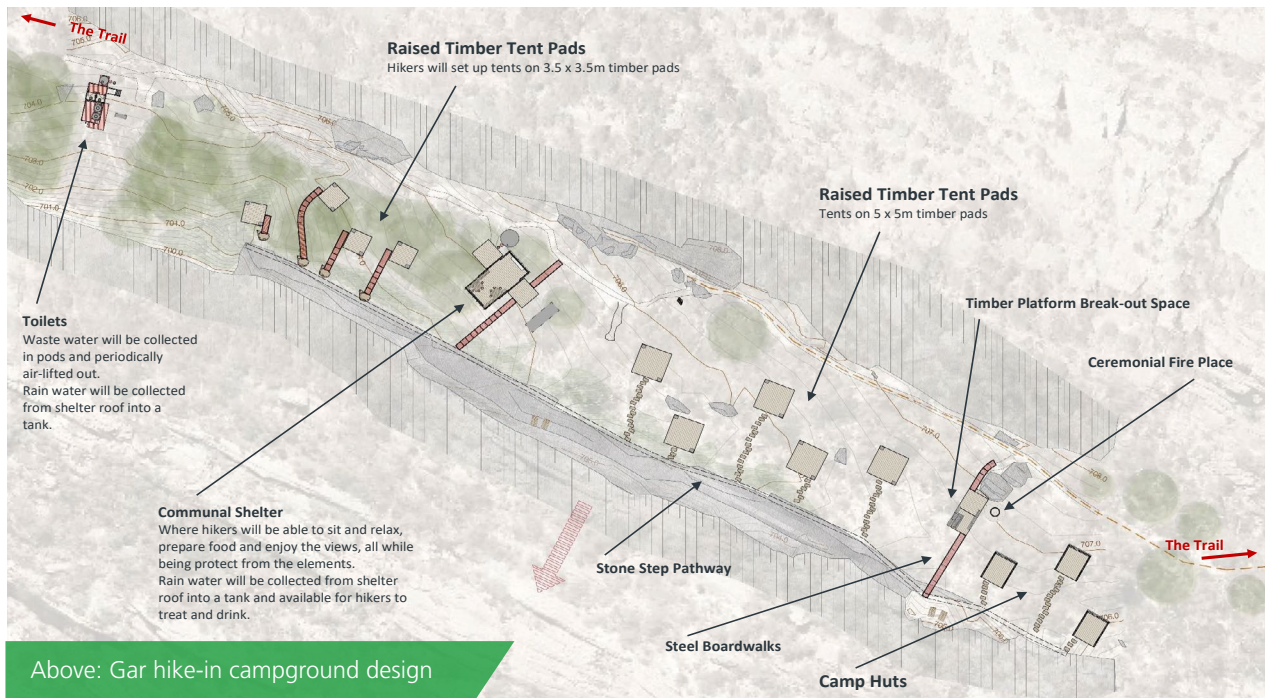
- DAY 1: Hike from Mt Difficult Rd to Werdug signature hike-in campground (1.5km)
- DAY 2: Hike Werdug to Halls Gap (13km)

2 day / 1 night (Off-Peak only)

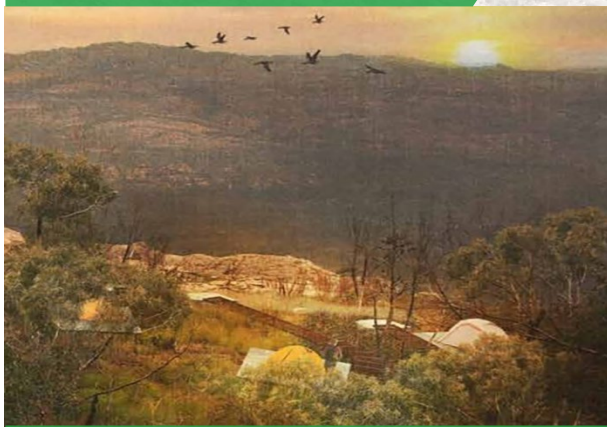
- DAY 1: Hike Troopers Creek to Gar signature hike-in campground (7.5km)
- DAY 2: Hike to Mt Difficult to Briggs Bluff to Beehive Car Park (12.5km)

Signature Hike-in Campground Designs

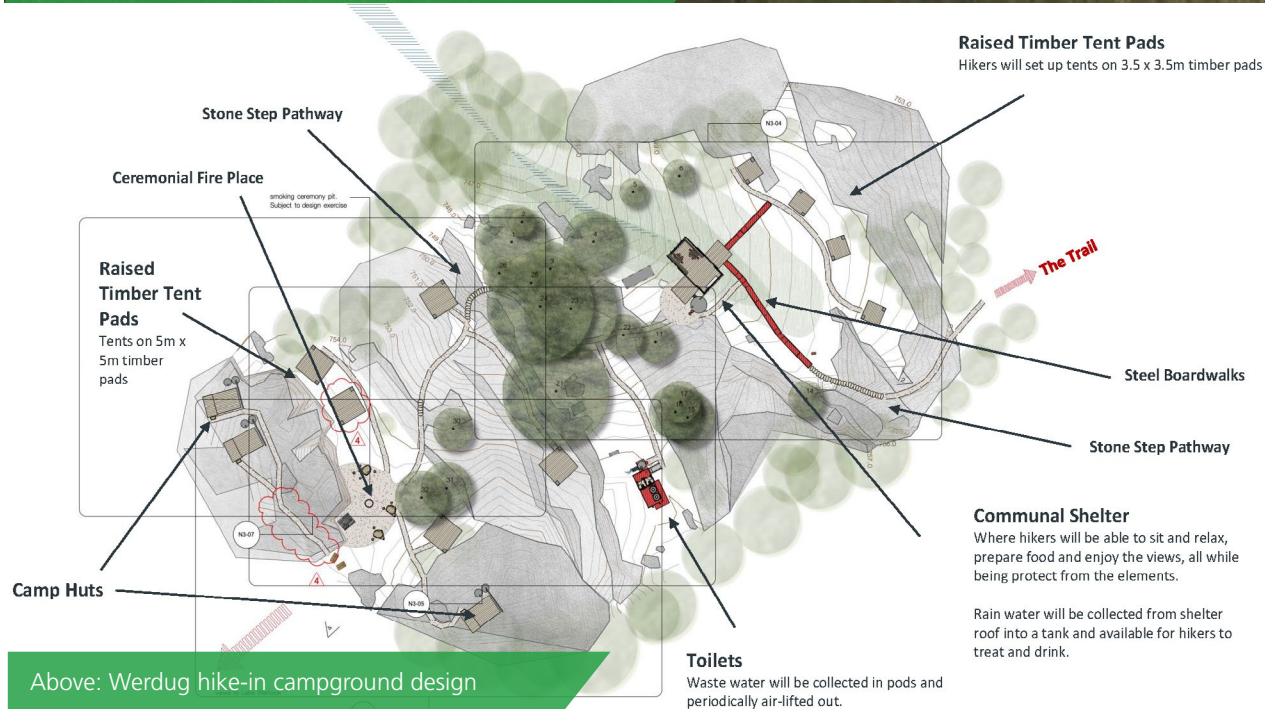
Each hike-in campground is unique and sympathetic to the surrounding landscape with orientation and amenities carefully designed and located to provide the optimal experience for hikers settling in for the night.



Above: Gar hike-in campground design



Above: Artist's rendition of hike-in campground and shelter



Above: Werdug hike-in campground design

Gar and Werdug Hike-in Campgrounds

Camp features

Hike-in Campground

- 2 unisex toilets
- 4 standard timber tent pads (3.5m x 3.5m)
- Communal shelter with kitchen bench, dining tables, seating, storage, phone charging points and water tank
- Landscaping to delineate campground zones
- Steel boardwalks and stone step paths

LTO access

- 3 huts with 4 beds each
- 5 large (2-3 person) raised timber tent pads (5m x 5m) for larger tents (LTO preferential access)
- Ceremonial fire place (for Traditional Owner ceremonies only)
- Timber platform break out / interpretation space
- LTOs accessing the Gar Huts only will have additional access to the Longpoint Fireline Management Vehicle Only (MVO) track to service their walking parties.



Above: Artist's rendition of hike-in campground huts

Next Steps

Parks Victoria invites you to apply for a tour operator licence to conduct bushwalking activities on the Grampians Peaks Trail. Applications are being accepted for both GPT Standard and GPT Signature licences. Only GPT Signature licensees will be able to book the Huts at Gar and Werdug.

The 2021/2022 licensing period will begin for GPT Licences in June 2021. GPT accommodation will be bookable for September 2021.

Parks Victoria plans to organise site visits to Gar and Werdug in mid 2021 for those licensed to book the hike-in campgrounds. Site visits may also include a Traditional Owner induction program.

Further information will be available to tour operators as the Grampians Peaks Trail progresses.

Various GPT information sessions and workshops are planned for 2021, and interested parties will be notified of details when they become available.

CONTACT:

Tour operator licencing: parks.vic.gov.au

GPT LTO packaging: Tourism Partnerships 03 8427 2025 or ltolicencing@parks.vic.gov.au

GPT status, maps, plans and designs:

parks.vic.gov.au/projects/grampians-peaks-trail



Disclaimer

This GPT LTO prospectus is intended to provide background information.

Parks Victoria does not give any warranty, expressed or implied, as to the accuracy or completeness of information contained in this prospectus or which may be provided in association with it, before this date, or in future by Parks Victoria, its officers or agents.

Parks Victoria does not accept any responsibility to any applicant or third party under the law of contract, tort or otherwise for any loss or damage which may arise from anything contained in this prospectus, any matter deemed to form part of it, or any information supplied on behalf of Parks Victoria.

Parks Victoria does not take responsibility for Grampians Peaks Trail or hike-in campground impediments such as access or approvals.

All information given to an applicant by Parks Victoria or its respective officers or agents will be given on an 'all care and no responsibility' basis.

Applicants acknowledge and agree that a Licensed Tour Operator application does not create a process contract.

By submitting an application, the applicant agrees, without qualifications, to have acknowledged and accepted this disclaimer.