

Reducing Bushfire and Grassfire Risk Plenty Gorge Parklands

We work year round to reduce the risk of fires in the park. You've probably noticed some of the work we've done.

Although bushfire is a natural part of the Australian landscape, the risk of bushfires cannot be eliminated. However, their impact can be reduced by effective planning and preparation.

Fire management works you may have noticed over the past year include:

- Maintenance of 56 kilometres of fuelbreaks and tracks to allow fire management vehicle access.
- Maintenance works on 20 kilometres fire vehicle access roads including significant drainage upgrade.
- Completed an 11 hectare burn in Autumn in the south east of the park

Fuelbreaks protect communities by creating a break in the fuel available for fires, for example between the trees and shrubs in the park and residential areas. Fuelbreaks help firefighters by providing access for vehicles and machinery. Fuelbreaks are not intended to stop the spread of fire and cannot protect against ember attack, but they can help reduce the intensity and speed of a fire moving across the landscape.

Grass is cut along fuelbreaks based on its dryness, or 'curing', not grass height.



Particularly in urban areas, like Plenty Gorge, roads are considered as fuelbreaks between remnant bushland and residential areas adjacent to parks.

What you can do to help

If you live or work on the outskirts of a city or town, you might be next to grassland, parks, paddocks or bush. For your safety, you need to understand your risk and plan ahead. Know what to do on hot, dry, windy days and plan for all situations.

Grassfires can start anywhere and spread quickly. If you live next to grassland and a grassfire starts, walk at least two streets back from the fire.

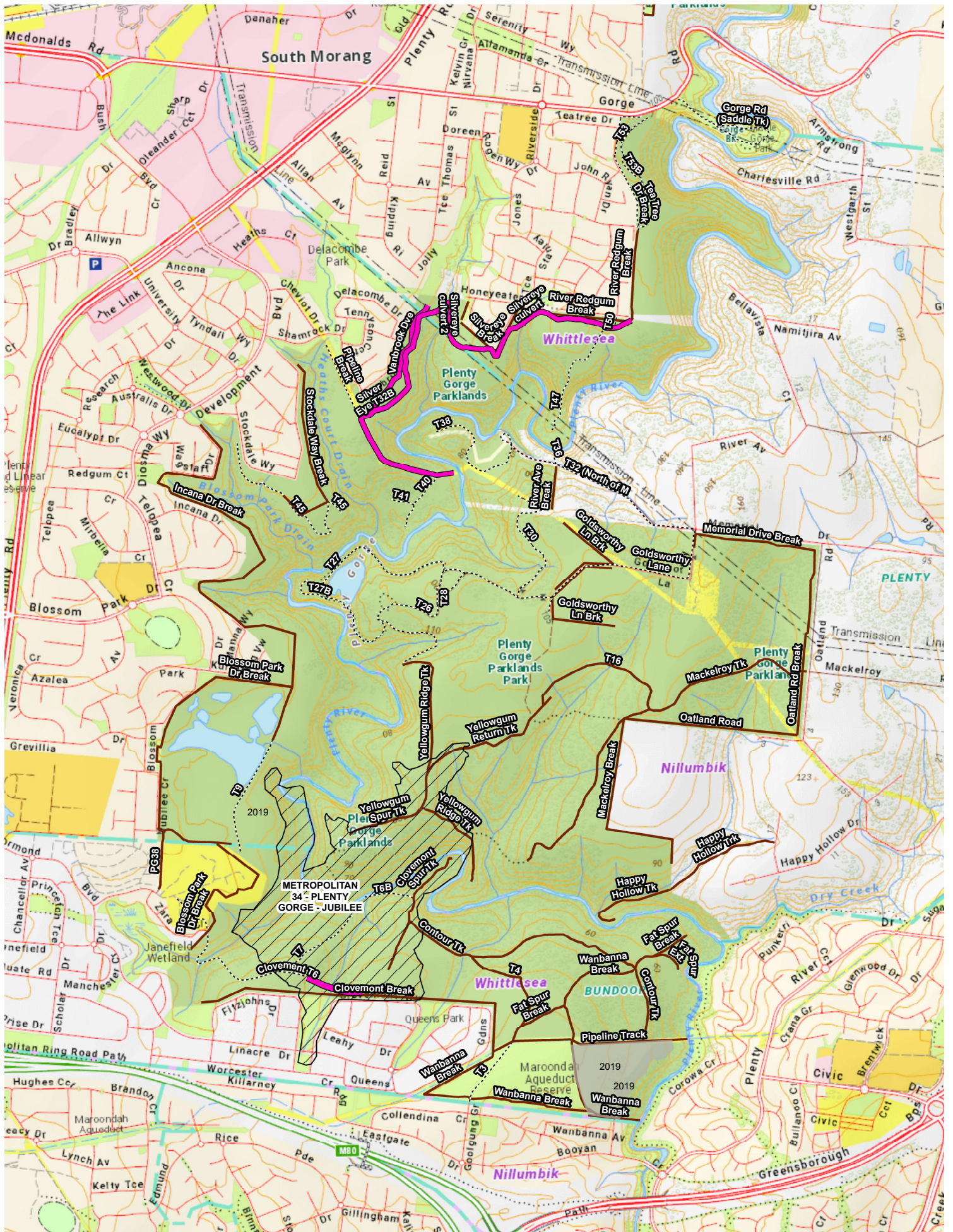
During spring, summer and autumn it is common for park rangers from Plenty Gorge Parklands to help with bushfires across Victoria. During these times, please be aware that you may see less staff doing regular park duties in the park.

The park is closed on Code Red Fire Danger Days. For more information about staying safe, please visit: www.cfa.vic.gov.au/plan-prepare/grassfires-near-cities-and-towns

Joint Fuel Management Plan

For information on past and future burns and the location of our annual slashing program visit the interactive map at ffm.vic.gov.au/jfmp (turn on 'fire history' and 'mechanical works' layers).

Photo: Bushfire in Plenty Gorge Parklands, January 2020



Plenty Gorge Parklands

Produced on: 02/01/2020
 Coordinate System: GDA 1994 MGA Zone 55
 Projection: Transverse Mercator



0 0.25 0.5 Km



Legend

- 18-20 Roding works (fire access)
- Planned burn 2019
- Burnt Area Jan 2 2020
- Annually slashed fuelbreak Other
- tracks

Disclaimer: Parks Victoria does not guarantee that this data is without flaw of any kind and therefore disclaims all liability which may arise from you relying on this information.
 Data source acknowledgements: State Digital Mapbase, The State of Victoria and the Department of Environment, Land, Water and Planning.